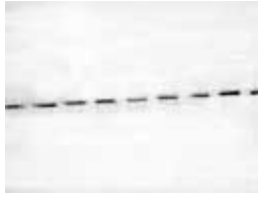


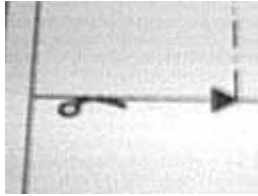
Key



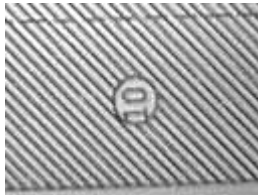
Score and fold down along dashed lines.



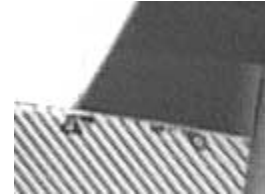
Fold up along dash dot lines



Cut along straight lines



Glue numbered part to crosshatch



Construction Tips

**Read the instructions through first
Take each figure in numerical order
Score (use an empty ball point pen)
dashed and dash dot lines and cut
parts using a straight edge.
Cut around the outer line and any
other lines which are marked with
scissors.**

**Fold according to key.
When you have checked the final
position of each piece, glue on the
cross hatched areas and fix in place.
Glue parts together on flat surface to
avoid twist. Then move onto next part.**

**Make sure glue has set before further
assembly.**

